

**Tillbridge Solar Project  
EN010142**

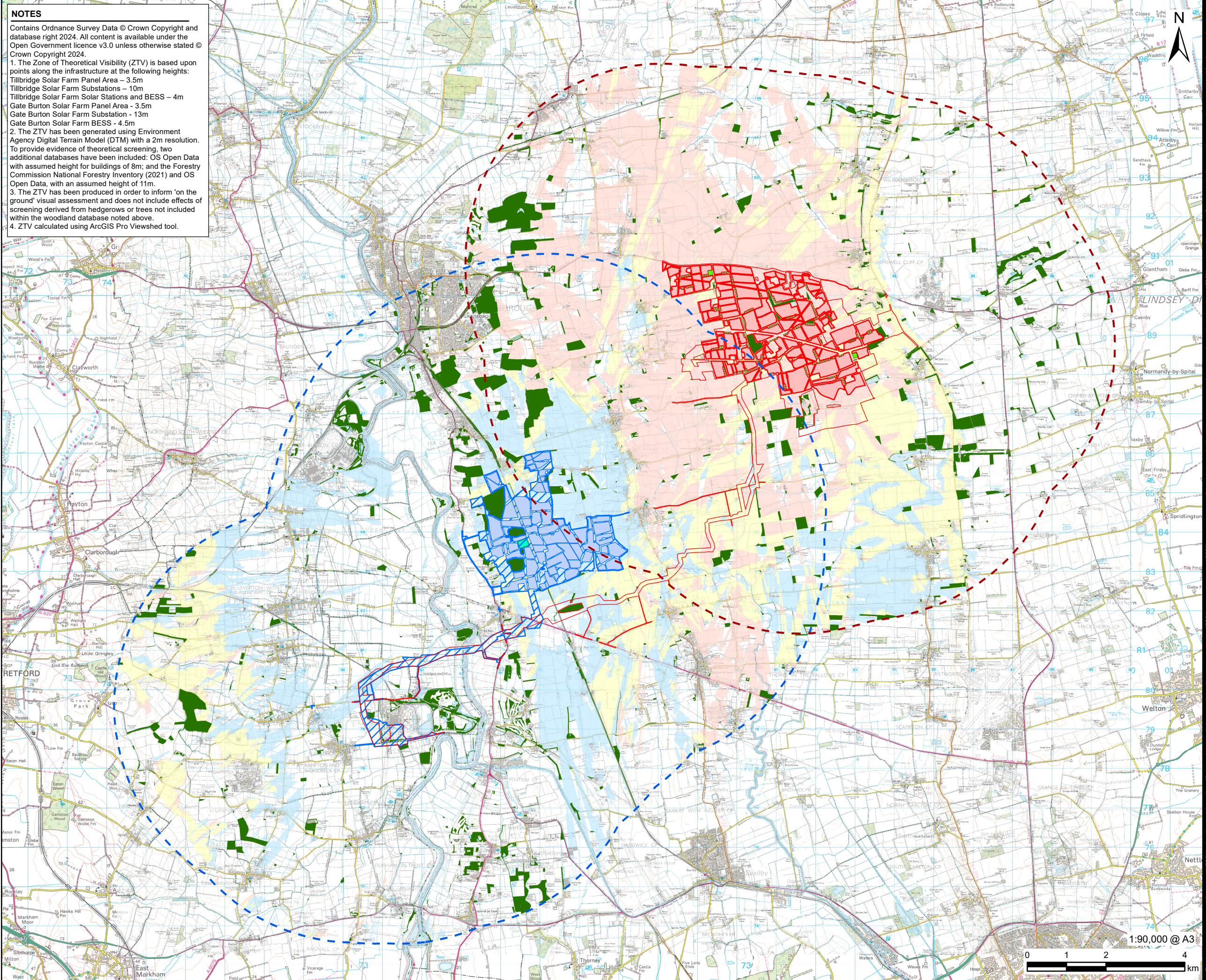
**Volume 6  
Environmental Statement**

**Figure 18-4: Combined ZTV of the Scheme's Solar Panel Area  
Barrier ZTV within 5km Buffer and Gate Burton's Solar Panel  
Area Barrier ZTV within 5km Buffer  
Document Reference: EN010142/APP/6.3**

**Regulation 5(2)(a)  
Infrastructure Planning (Applications: Prescribed Forms and  
Procedure) Regulations 2009**

**April 2024  
Revision Number: 00**





**NOTES**  
Contains Ordnance Survey Data © Crown Copyright and database right 2024. All content is available under the Open Government licence v3.0 unless otherwise stated © Crown Copyright 2024.  
1. The Zone of Theoretical Visibility (ZTV) is based upon points along the infrastructure at the following heights:  
Tillbridge Solar Farm Panel Area – 3.5m  
Tillbridge Solar Farm Substations – 10m  
Tillbridge Solar Farm Solar Stations and BESS – 4m  
Gate Burton Solar Farm Panel Area - 3.5m  
Gate Burton Solar Farm Substation - 13m  
Gate Burton Solar Farm BESS - 4.5m  
2. The ZTV has been generated using Environment Agency Digital Terrain Model (DTM) with a 2m resolution. To provide evidence of theoretical screening, two additional databases have been included: OS Open Data with assumed height for buildings of 8m; and the Forestry Commission National Forestry Inventory (2021) and OS Open Data, with an assumed height of 11m.  
3. The ZTV has been produced in order to inform 'on the ground' visual assessment and does not include effects of screening derived from hedgerows or trees not included within the woodland database noted above.  
4. ZTV calculated using ArcGIS Pro Viewshed tool.

**AECOM**

**PROJECT**  
Tillbridge Solar Project

**CLIENT**  
Tillbridge Solar Ltd

**CONSULTANT**  
Aldgate Tower  
2, Leman Street  
London, E1 8FA  
United Kingdom  
T +44-0207-645-2000

**LEGEND**

- Buildings
- Woodland
- Tillbridge Solar Project**
  - Order limits
  - Principal Site - 5km Study Area
  - Indicative BESS/Solar Station Boundary
  - Indicative Solar Panel Boundary
  - Substation
- Gate Burton Energy Park**
  - Site Boundary
  - 5km Study Area
  - Solar Panel Boundary
  - Substation and BESS
- Zone of Theoretical Visibility**
  - No Theoretical Visibility
  - Tillbridge Solar Farm Theoretical Visibility
  - Gate Burton Solar Farm Theoretical Visibility
  - Tillbridge Solar Farm and Gate Burton Solar Farm Theoretical Visibility

**ISSUE PURPOSE**  
DCO Submission

**PROJECT NUMBER**  
60677969

**FIGURE TITLE**  
Combined ZTV of the Scheme's Solar Panel Area Barrier ZTV within 5km buffer and Gate Burton Energy Park's Solar Panel Area Barrier ZTV within 5km buffer

**FIGURE NUMBER**  
Figure 18-4

1:90,000 @ A3

0 1 2 4 km

This drawing has been prepared by the use of AECOM's client. It may not be used, modified, reproduced or relied upon by third parties, except as agreed by AECOM or as required by law. AECOM accepts no responsibility, and denies any liability whatsoever, to any party that uses or relies on this drawing without AECOM's express written consent. Do not scale this document. All measurements must be obtained from the stated dimensions.